

Revontuli-shawl

© AnneM

Revontuli means Northern Lights (Aurora Borealis) in Finnish



Please let me know if you knit this shawl, I love to see a picture of it.
(muro73@gmail.com)

Yarn: 180g Aade Lõng 100% wool, [100g=400m 8/2 (125 tex*2)]

You can also use Evilla'r or Kauni's yarns

Needles: 5.5mm

On the Charts are only right side rows. On the wrong side: knit first and last 2 sts, purl all other stitches,

NOTES: knit WS rows 137, 139 and 141. They are shown black line in chart 3.

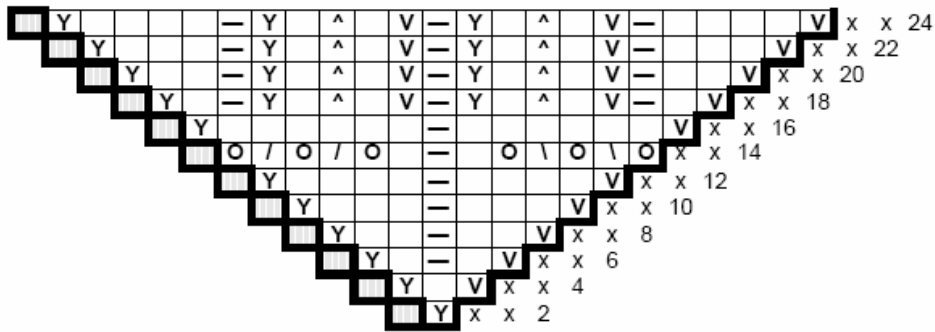
On the 1 Chart is half of the shawl, so repeat chart sts after center stitch..

Repeat charts 2 and 3 8 times on every row.

x knit
grey center stich, purl
— purl
Y M1 (a right-leaning increase)
V M1 (a left-leaning increase)
^ sl 1 as if to knit, k2tog, pass slipped st over
O yo
\
/ k2tog

SHAWL: Cast on 5 stitches. Knit first row (WS).

Work rows 2-25 of **Chart 1** = 51sts. On the 1 Chart is shown half of shawl= knit 2 bordes stitches, chart 1, knit center sticht (shown grey on the left), repeat chart 1 and knit 2 border stitches.



Work rows 26-103 of **Chart 2**. Row 26 work as follows: knit 2 sts (border stiches), *knit chart 2, purl 1 (center stich)t* 7 times total, knit Chart 2, knit 2 sts (border sts). So, on every row, repeat chart 2 a total of 8 times."

